

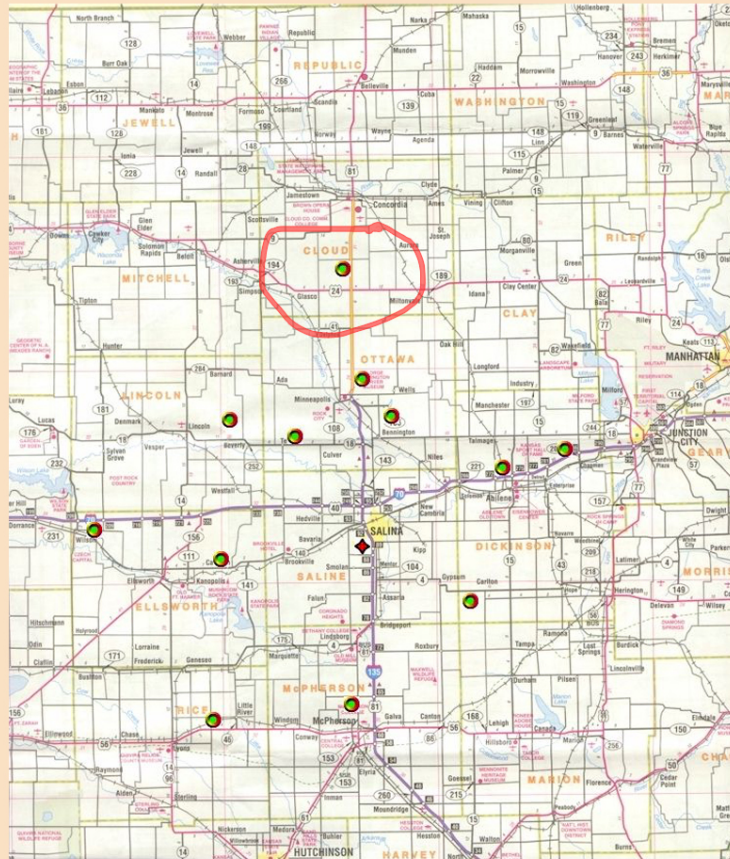


Silos for the Super-Rich
atlas missile silo turned luxury condos

~~Survival Condo~~

: earl gravy

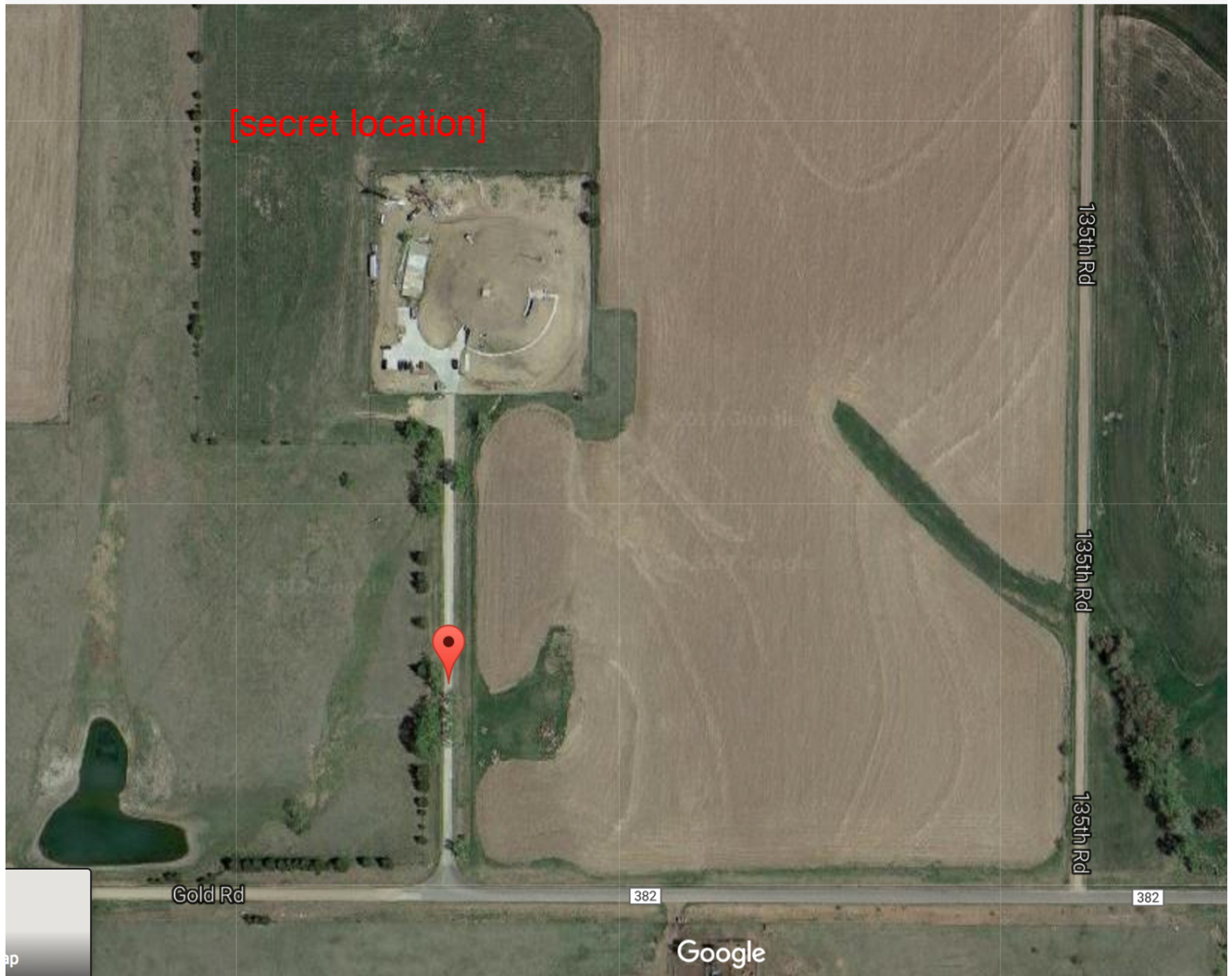
ATLAS F COMPLEX



550th SMS - Site II - Glasco, Kansas

USGS

ATLAS F COMPLEX



1325 Gold Rd, Concordia
KS 66901

ATLAS F COMPLEX



Strategic Missile Squadron: 550th
Support Base: Schilling AFB - Salina, Kansas
Operational Site #: 11
Construction Site #: ?
Location: Glasco, Kansas
Latitude: 39-24-43
Longitude: 097-40-50
Construction Start Date: ??/??/????
On-Alert: ??/??/????
Decommissioned: ??/??/????
Current Owner: Private Individual
Web Site: N/A



He isn't worried about the end of the world happening this

1325 Gold Rd, Concordia
KS 66901

ATLAS F COMPLEX

"This project has the advantages of letting the members own a piece of history, the coolness of a missile base, the protection of a nuclear hardened bunker, and the features of a luxury condo."

-Larry Hall
Project Manager/Owner
Luxury Survival Condo



Military Grade Security *Item 8 of 18*

1325 Gold Rd, Concordia
KS 66901

ATLAS F COMPLEX

Hall completed construction on his first luxury bunker in 2012. All seven of the 1,820-square-foot floors have been sold, four of them to the executive of a tobacco-product firm, who paid \$12M in cash. A Florida nightclub owner who bought a full-floor unit in a second compound that's currently under construction maintains that he is not at all the "tin foil hat-wearing" type.

Tinfoil being the poor man's response to irrational fears.



1325 Gold Rd, Concordia
KS 66901

ATLAS F COMPLEX



An armed guard stands at the entrance of the Survival Condo Project, a former missile silo north of Wichita, Kansas, that has been converted into luxury apartments for people worried about the crackup of civilization.

Photograph by Dan Winters for The New Yorker

**1325 Gold Rd, Concordia
KS 66901**

ATLAS F COMPLEX



The living room of an apartment at the Survival Condo Project.

Photograph by Dan Winters for The New Yorker

Tim Chang, a forty-four-year-old managing director at Mayfield Fund, a venture-capital firm, told me, “There’s a bunch of us in the Valley. We meet up and have these financial-hacking dinners and talk about backup plans people are doing. It runs the gamut from a lot of people stocking up on Bitcoin and cryptocurrency, to figuring out how to get second passports if they need it, to having vacation homes in other countries that could be escape havens.”

He said, “I’ll be candid: I’m stockpiling now on real estate to generate passive income but also to have havens to go to.”

“I kind of have this terror scenario: ‘Oh, my God, if there is a civil war or a giant earthquake that cleaves off part of California, we want to be ready.’”

ATLAS F COMPLEX

full-floor unit: 3 million dollars

full-floor unit: 3 million dollars

full-floor unit: 3 million dollars

full-floor unit: 3 million dollars

full-floor unit: 3 million dollars

full-floor unit: 3 million dollars

full-floor unit: 3 million dollars

full-floor unit: 3 million dollars

full-floor unit: 3 million dollars

full-floor unit: 3 million dollars

1325 Gold Rd, Concordia
KS 66901

SURVIVAL BUCKET

fancy feast "elite"



deliverable to:

**1325 Gold Rd, Concordia
KS 66901**

SURVIVAL BUCKET

fancy feast "elite"



deliverable to:

**1325 Gold Rd, Concordia
KS 66901**

SURVIVAL BUCKET

fancy feast "elite"



contact us if you would like Earl Gravy to
send Larry and his pal\$ a *Fancy Feast Elite
Survival Bucket* on your behalf!

deliverable to:

1325 Gold Rd, Concordia
KS 66901

resources

<http://www.curbed.com/2014/11/10/10025244/larry-hall-luxury-survival-condos>

<http://survivalcondo.com/details/>

<http://www.newyorker.com/magazine/2017/01/30/doomsday-prep-for-the-super-rich>

<http://www.themodernsurvivalist.com/>

<http://www.cnbc.com/2017/01/25/the-super-rich-are-preparing-for-the-end-of-the-world.html>

<http://www.forbes.com/sites/jimdobson/2015/06/12/billionaire-bunkers-exclusive-look-inside-the-worlds-largest-planned-doomsday-escape/#66b9ca8e5afb>

etc.



Earl Gravy is an artist duo based in Los Angeles.